

# DUMPING OF WASTE AND OTHER MATTERS IN THE OCEANS

**JOHN KNIGHT, PARTNER**

2 – 4 SEPTEMBER 2009



# INTERNATIONAL AGREEMENT

- The London Convention - 1972
- The London Protocol - 1996



# DUMPING

- Deliberate disposal into the sea of wastes from vessels, aircraft, platforms or other man-made structures
- Deliberate disposal of vessels, aircraft, platforms or other man-made structures at sea
- Storage of wastes in the seabed from vessels, aircraft, platforms or other man-made structures at sea
- Abandonment or toppling at site of platforms or other man-made structures at sea, for the sole purpose of deliberate disposal

# NOT DUMPING

- Waste derived from the normal operations of vessels, aircraft, platforms or other man-made structures
- Placement or abandonment of matter for purpose other than disposal

# SCHEME

- All dumping prohibited unless coming within prescribed classes
- Dumping within class subject to authorisation and controls i.e. permits
- Contracting states responsible for dumping within EEZ and flag ships on High Seas

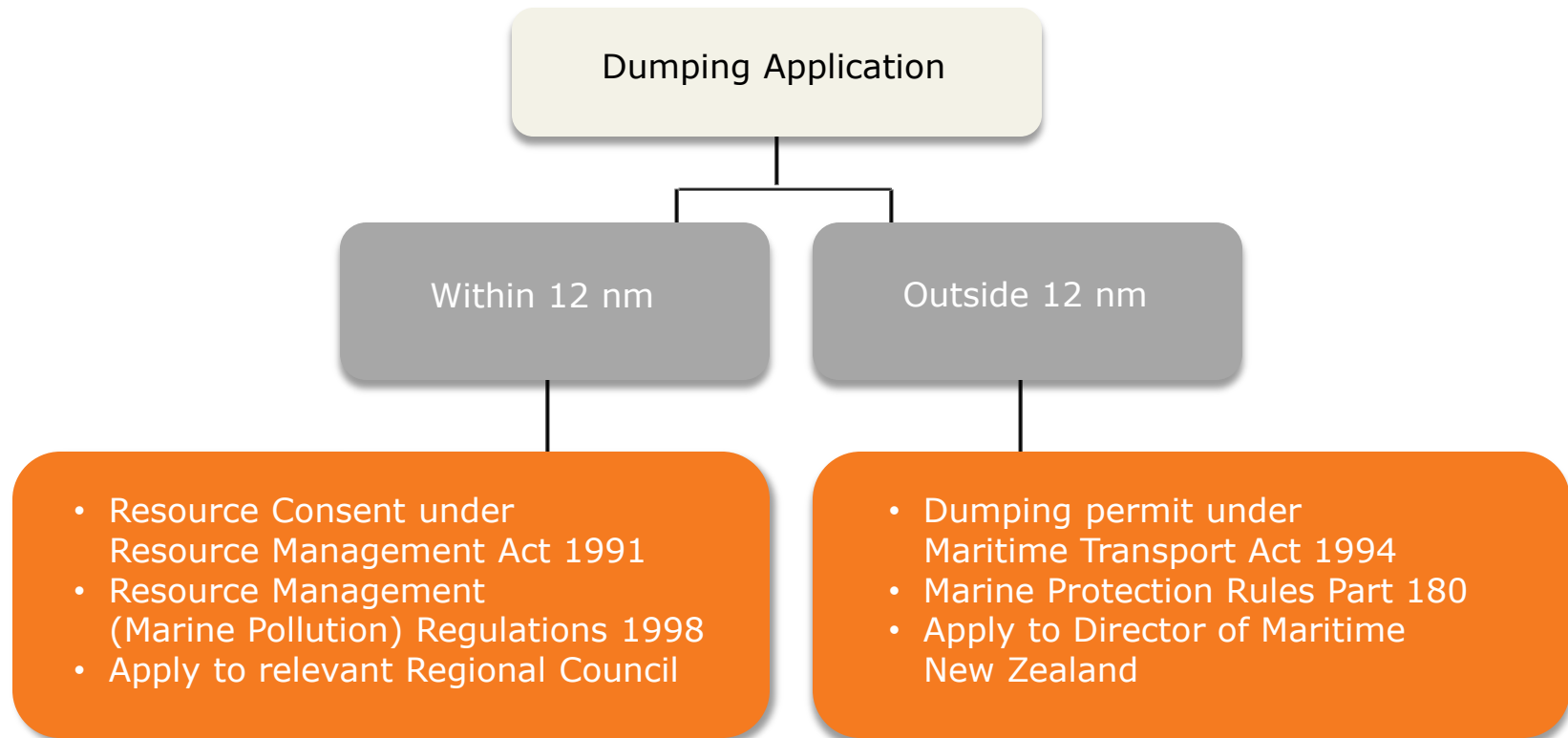
# CLASSES OF MATERIAL - 1

- Dredged material
- Sewage sludge
- Fish waste, or material resulting from industrial fish processing operations
- Vessels and platforms or other man-made structures at sea
- Inert, inorganic geological material
- Organic material of natural origin

## CLASSES OF MATERIAL - 2

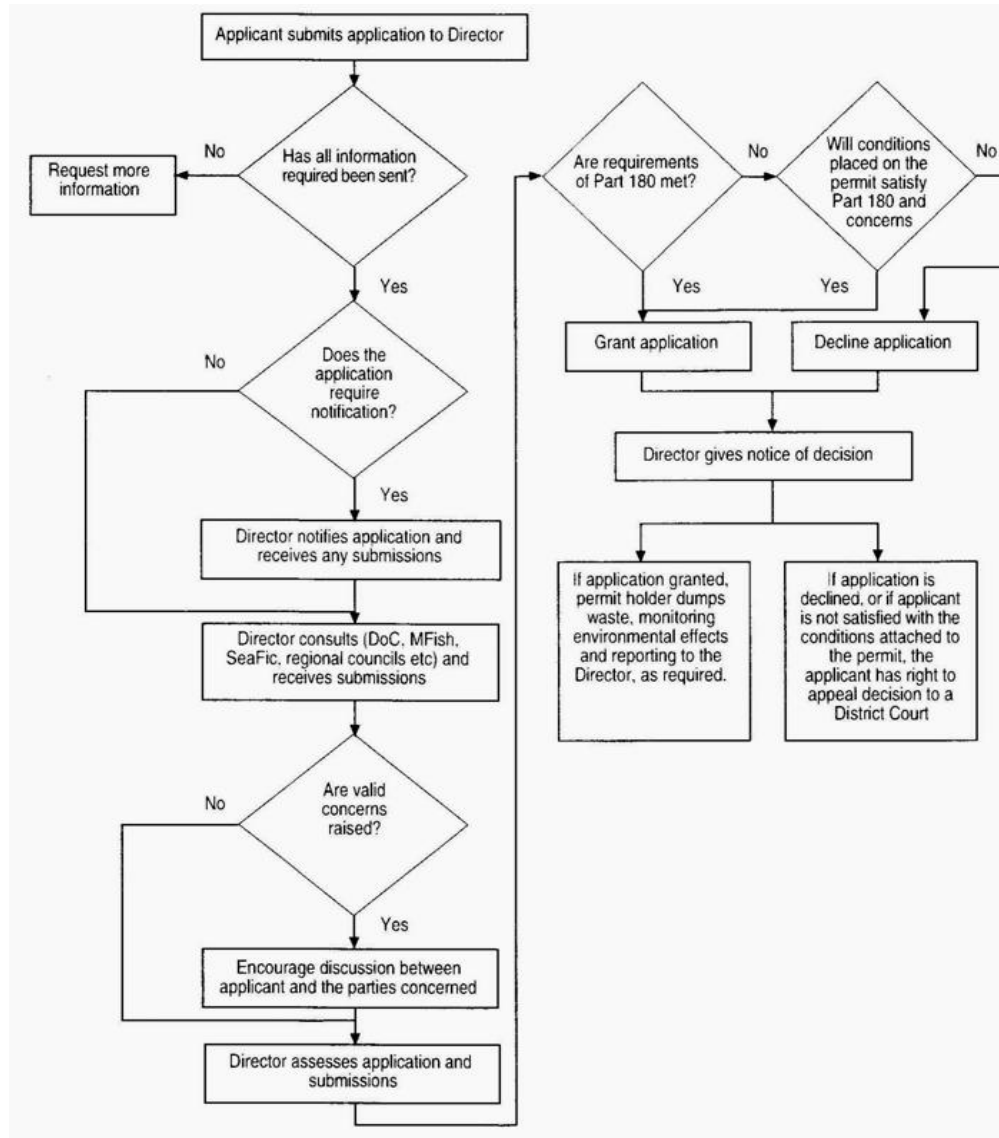
- Bulky items primarily comprising iron, steel, concrete and similarly unarmful materials for which the concern is physical impact, and limited to those circumstances where such wastes are generated at locations, such as small islands with isolated communities, having no practicable access to disposal options other than dumping
- Carbon dioxide streams from carbon dioxide capture processes for sequestration

# NEW ZEALAND DOMESTIC





# APPLICATION PROCESS



# ASSESSMENT CRITERIA

- Requirements under the London Convention
- Guidelines for implementation and uniform interpretation adopted under the convention
- Results of Director's consultation
- New Zealand Guidelines for Sea Disposal of Waste

# ASSESSMENT CRITERIA

- May have regard to other guidelines published by IMO, other international organisations or other states
- Cannot grant permit that would breach the London Convention
- Permit conditions
- Emergency dumping permits

# PRACTICAL APPLICATION

- Dredge spoil and sediments
- Derelict vessels
- Fish Waste
- “mortal remains”
- Drilling rig anchor system



# FUTURE CHALLENGES

- Ocean fertilisation
- Carbon capture and sequestration
- Water hull cleaning – invasive aquatic species



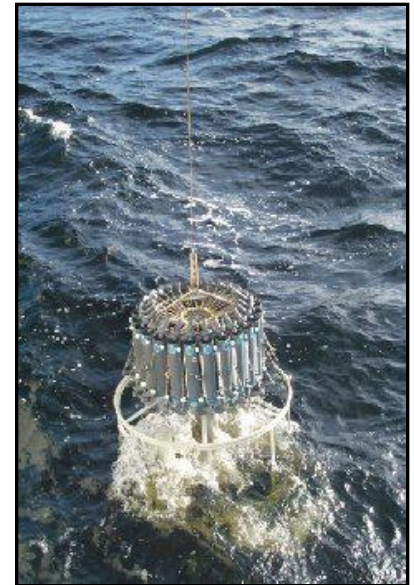
# OCEAN FERTILISATION

- Is it dumping?



# CARBON CAPTURE AND SEQUESTRATION

- Changing technology caught by legislation
- Storage reservoir straddling jurisdictions
- Pipeline control
- Long time frames



# INVASIVE AQUATIC SPECIES

- “organic material of natural origin”
- Normal operations of a vessel exception
- Clarification to ensure disposal of bio-fouling wastes covered

